

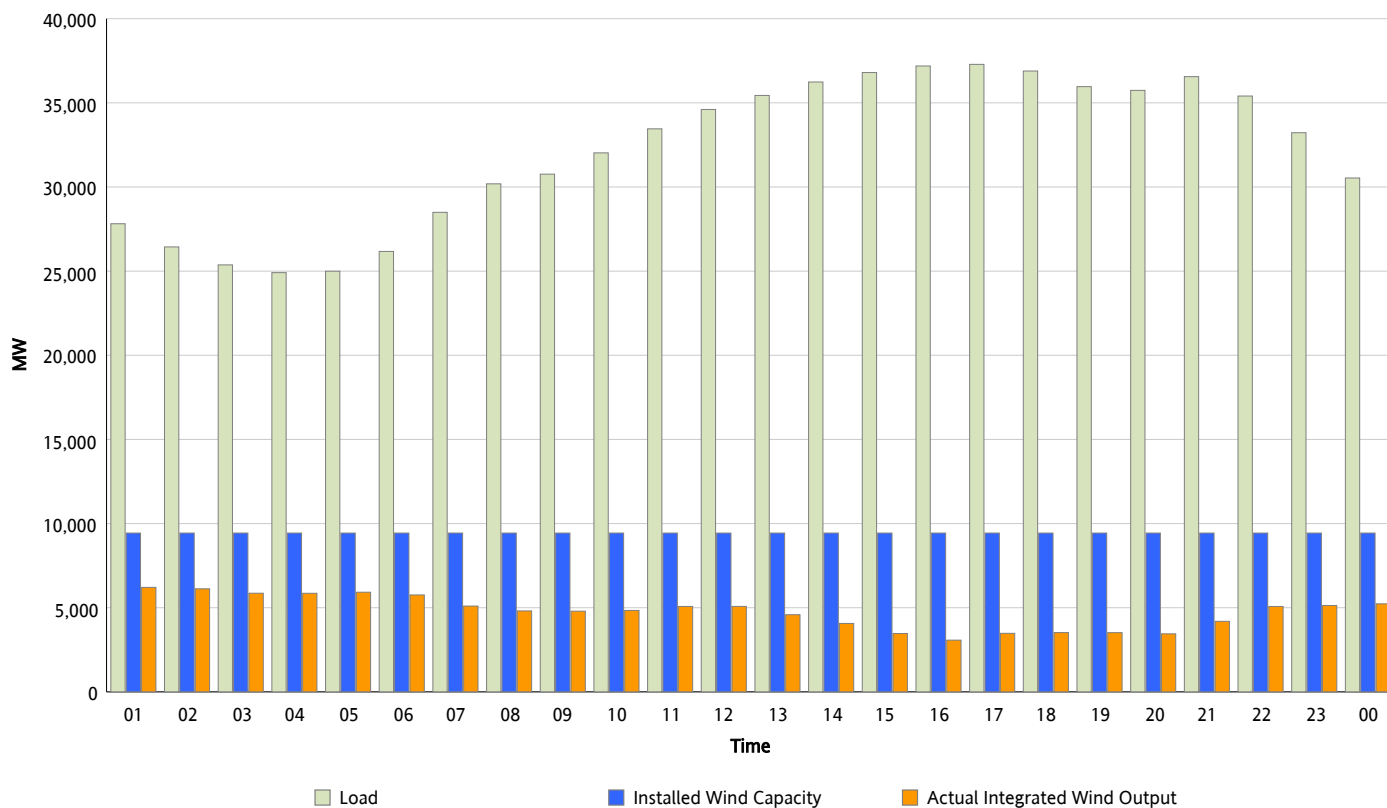


ERCOT Grid Operations

Wind Integration Report : 03/15/2012

Peak Load	37,286 MW
Load Peak Hour (HE)	17
Wind Over Peak	3,479 MW
Wind Record 03/07/12	7,599 MW
Max Wind Value*	6,511 MW
Wind Peak Time	00:00
Wind Integration %	22.73 %

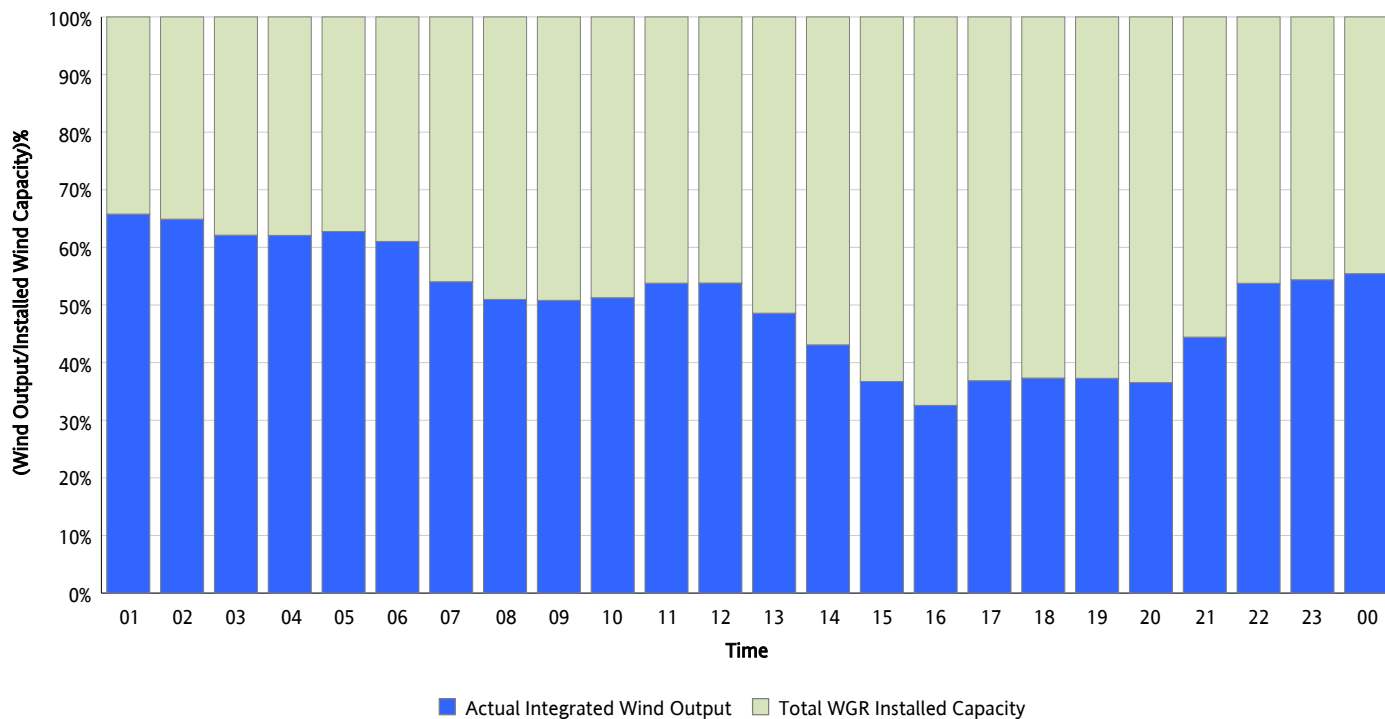
Hourly Average Actual Load vs. Actual Wind Output
03/15/2012



* Wind Record and Wind Max represent instantaneous values and the rest of the values are integrated over the hour

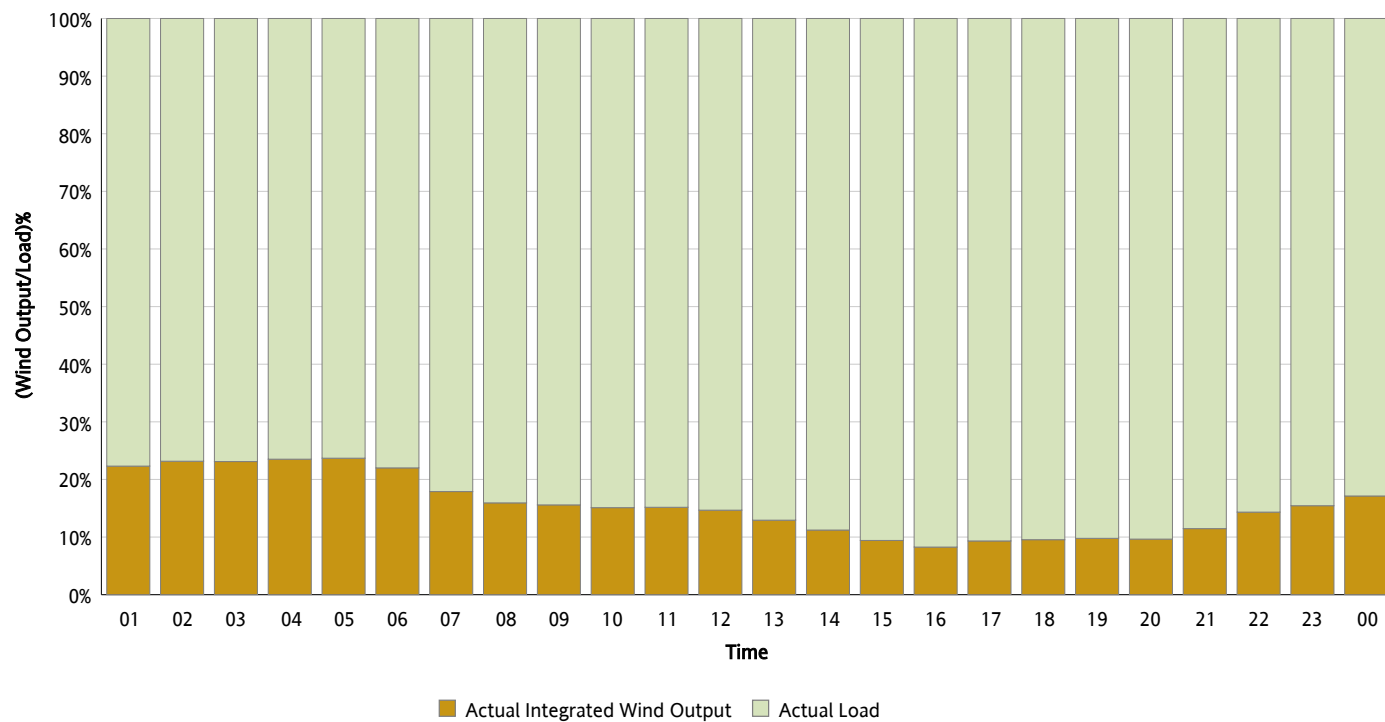
Actual Wind Output as a Percentage of the Total Installed Wind Capacity

03/15/2012



Actual Wind Output as a Percentage of the ERCOT Load

03/15/2012



ERCOT Load vs. Actual Wind Output

03/08/2012 - 03/15/2012

